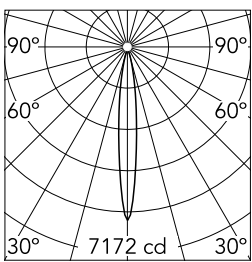
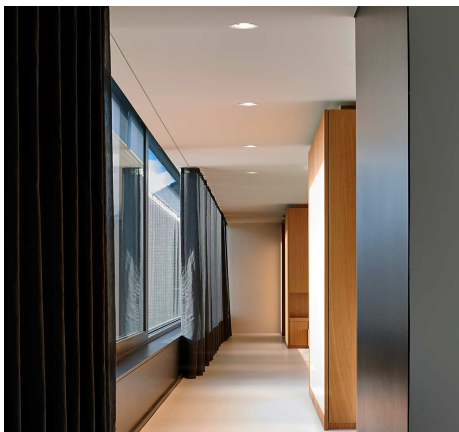


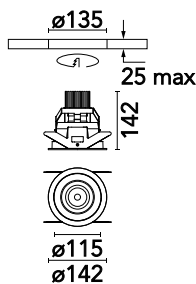


## Free Sixty

Free Sixty Trim



h(m)	E(lx)	D(m)
1	7172	0.21
2	1793	0.42
3	797	0.63
4	448	0.85
5	287	1.06



<b>Mountings</b>	Ceiling recessed
<b>Lamp category</b>	LED
<b>Colour temperature</b>	3000K
<b>CRI</b>	90
<b>Lumen</b>	566 lm
<b>Voltage (V)</b>	34.5
<b>Environment</b>	Indoor

<b>LED type</b>	LED array
<b>Aiming</b>	Adjustable
<b>Light Distribution</b>	Symmetric
<b>Beam Angle</b>	12

<b>Transformer Availability</b>	Separate item
<b>Transformer Mounting</b>	Remote
<b>Transformer Type</b>	Electronic, Electronic dimmable, Electronic dimmable 1-10V, Electronic dimmable DALI

<b>Frequency</b>	50/60
<b>Emergency</b>	Without
<b>Insulation Class</b>	III
<b>Lamp Holder</b>	LED
<b>Dimmable</b>	Yes

<b>Colors</b>	<ul style="list-style-type: none"> <li>● 03.2010.14 - Black</li> <li>● 03.2010.40 - White</li> <li>● 03.2010.CU - Copper</li> </ul>
---------------	---

<b>Certificates</b>	
---------------------	--

**Note** Installation frame must be

ordered separately  
(08.0508.40 / 08.0508.CU /  
08.0508.14).

## Free Sixty



---

Installation Frame Trim  
08.0508.14



---

Installation Frame Trim  
08.0508.40



---

Installation Frame No Trim  
08.0508.40.NT



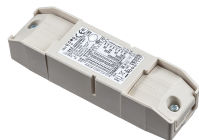
---

Installation Frame Trim  
08.0508.CU



---

Constant Current Power  
Supply for LED. 13-20W  
60.9188



---

Continuous current power  
supply of 13-42W  
60.9162



---

Constant Current Power  
Supply for LED. 10-20W  
60.8847



---

Constant Current Power  
Supply for LED. 18W  
60.9268